

C&G 2800 Levels 2 and 3 in Fabrication and Welding Engineering

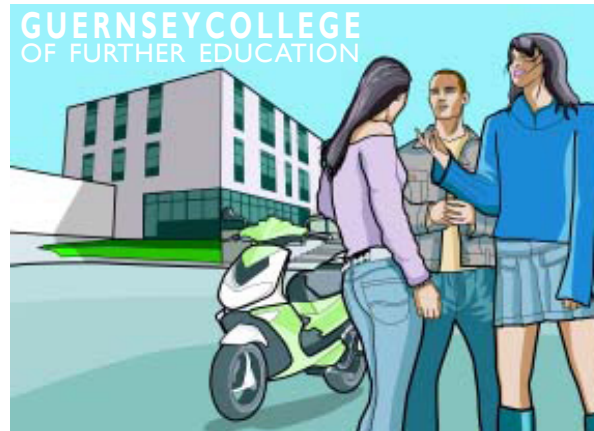
Entry requirements:

The selection of students for this course is at the discretion of the college, in consultation with your employer.

Although specific educational qualifications are not an essential requirement, good GCSE passes in Mathematics, English would be advantageous.

Progression:

Having completed these programmes, students can then progress by studying units towards the BTEC National Diploma in Manufacturing Engineering. See separate leaflet for full details.



If you would like to join us or wish to learn more about the 2800 programmes in Fabrication and Welding Engineering, please contact one of the following:

Programme Manager for Engineering,
John Semenowicz, e-mail: johns@gcfe.net
Tel 01481 737500

Head of School, John Norman
e-mail: johnn@gcfe.net
Tel 01481 737511

The Guernsey College of Further Education
Route des Coutanchez • St Peter Port • Guernsey • GY1 2TT
Tel: 01481 737500 • Fax: 01481 746730
Email: college@gcfe.net • web: guernseycollege.com

C&G 2800 Levels 2 and 3 in Fabrication and Welding Engineering

These programmes have been designed to provide both the practical skills and underpinning knowledge for students who are employed within the fabrication and welding industry.

Attendance is by day release, with the level 2 taking 2 years to achieve followed by a further two years to achieve the full level 3 certificate.

The Level 2 programme is made up of;

Three core engineering units

707 Using Bench Fitting Techniques
702 Engineering Technology
701 Working in Engineering

And three specialist units

718 Welding by MIG process
(level 2 practical standard)
717 Welding by Manual Metal Arc Process
(level 2 practical standard)
716 Fabrication & Welding Technology

C&G 2800 Levels 2 and 3 in Fabrication and Welding Engineering

The Level 3 programme is made up of;

Three common core units

001 Working effectively & safely in an engineering environment
002 Engineering principles and practice
003 Principles of welding

And a minimum of three additional specialist units from:

015 Manual Metal Arc Welding
(level 3 standard)
016 Metal Inert Gas Welding (MIG)
(level 3 standard)
017 Tungsten Inert Gas Welding (TIG)
(level 3 standard)
024 Pattern development fabrication

C&G 2800 Levels 2 and 3 in Fabrication and Welding Engineering

Learning and assessment:

During the completion of both the level 2 and level 3 units, students need to successfully complete a number of City and Guilds devised practical tasks. These require the application of communication, planning, doing and checking that the work conforms to the relevant industrial standard. Being able to carryout workshop calculations is an integral part of all engineering operations and students will be given the opportunity to have additional numeracy support if required.

Assessment is through a combination of;

- City and Guilds externally set examinations (open written and multi-choice questions)
- City and Guilds practical tasks
- Completion of logbooks.

Information for students who are also registered as States of Guernsey Apprentices.

A states apprentice, upon the achievement of the level 3 certificate and the completion of the 5th year workbased element, will also be awarded the full Guernsey Apprenticeship Certificate.

(The worked based element requires the successful completion of workbased diaries by recording the skills used in the workplace)