

Information Technology & Computing



Guernsey
College
of further
education

Information Technology & Computing

Introduction to the course

Become an IT Practitioner – we offer courses up to Level 3 BTEC Extended Diploma in Computing, (equivalent to three A Levels).

Entry criteria

Level 2: Four GCSEs at grade D/3 or equivalent, across a range of subjects one of which must be English Language.

Level 3: Five GCSEs at grade C/4 or above, across a range of subjects one of which must be English language and another preferably also mathematics.*

Progression opportunities

Level 2: Can lead to employment or provide progression onto the Level 3 programme

Level 3: Foundation students can progress to the Extended Diploma (with a Merit or higher) or access a range of job opportunities.

Level 3: Extended Diploma students can progress to Higher Level courses such as HNC, HND and Foundation Degrees, access universities or a range of job opportunities.

Course outline

The Level 2 qualification is a one-year course with a new syllabus to reflect the developments in this fast paced industry. This is equivalent to four GCSEs. Initially students study 3 units (BTEC Award in Digital Information Technology)

- Exploring User Interface Design Principles and Project Planning Techniques
- Collecting, Presenting and Interpreting Data
- Effective Digital Working Practices

The Level 2 also includes units (Cambridge Technical in IT)

- Website development
- Communicating in the IT industry
- Handling data using spreadsheets
- IT security
- Working in the IT industry
- Database systems
- Spreadsheet modelling
- Developing computer games

Campus

Coutanchez

* Most universities require five GCSEs at grade C/4 or above, including English

Students who successfully complete all elements of their programme at



Computing

Assessment method

Level 2 consists of a combination of exams and coursework.

Level 3 consists of 13 units (seven mandatory and six optional). Of these, two units are externally examined, and two are also based on a written task assessed by the awarding body Pearson. The remaining nine are internally assessed.

Course duration

Level 2: One year, full time.

Level 3 Foundation Diploma: One year, full-time.

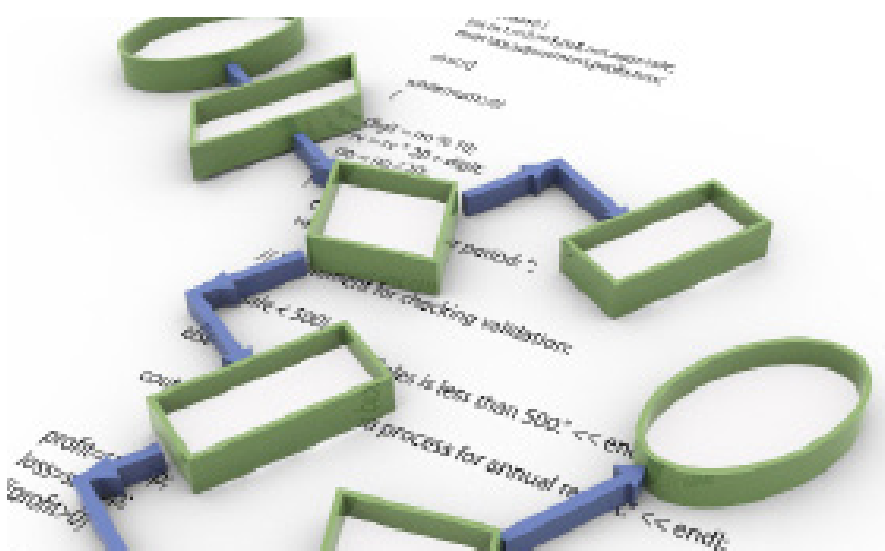
Level 3 Extended Diploma: One year, full-time.

The Level 3 qualification is aimed at students wishing to develop a broad range of IT and computing skills that can lead to employment or to further study on a degree programme. This course is delivered in two parts: Foundation Diploma (equivalent to 1.5 A Levels) & Extended Diploma (requiring a Foundation Diploma at Merit or higher).

Units

Level 3 Foundation consists of two mandatory modules and four other modules:

- Principles of computer science
- Fundamentals of computer systems
- IT systems security and encryption
- Business applications of social media
- Computer games development
- Mobile apps development



English and maths, as well as a Level 3 qualification.

College will be able to progress onto the next level, eg from Access to Level 1, Level 1 to Level 2, and from Level 2 to Level 3.

Additional learning support

As part of your learning programme, if you have not yet attained a grade C/4 or equivalent in mathematics and English language, you will be required to study a Functional Skill or GCSE in these subjects.

Students may require additional support for a number of reasons. At the start of your course you will be asked to complete an initial assessment in order for us to identify any additional needs that you may have. During your course, your personal tutor will be able to guide you on how best to access support.

We can offer the following:

- Progress Coaches
- Learner Support assistance (1:1)
- Learner Support assistance (group)
- Learner Support assistance (drop-ins)
- Specialist ESOL teaching
- Study lab sessions
- In-class support
- Special arrangements for exams

For more details or how to apply, please contact:

Fiona Girard

fonag@gcfe.net (01481) 737500

Guernsey College of Further Education


Chairman Julian Winser

Principal Louise Misselke RGN, BSc, MSc, Cert Ed.

 (01481) 737500

 college@gcfe.net

 www.guernseycollege.ac.gg

 Coutanchez Campus, Route des Coutanchez, St Peter Port, Guernsey, GY1 2TT

 GuernseyCollege

 @GuernseyCollege

 Guernsey College of Further Education


**Guernsey
College**
of further
education

NB: Course information correct at time of print.

Courses offered may be subject to change and will run subject to minimum numbers.

● October 2019